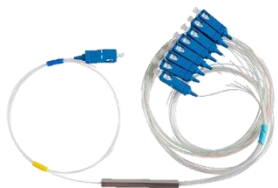




X-CORN



FIBER OPTIC ACCESSORIES



FIBER OPTIC ACCESSORIES

Steel tube PLC Splitter

- » Low IL&PDL
- » Uniformity & high reliability
- » 1260-1620nm wavelength
- » Steel tube PLC Splitter:1X2, 1X4, 1X8, 1X16, 1X32, 1X64, 2X2, 2X4, 2X8, 2X16, 2X32, 2X64,
- » Excellent Mechanical & Environmental Stability
- » Stability Telcordia GR-1221 and GR-120

PLC Splitter Module

- » 1X2, 1X4, 1X8, 1X16, 1X32, 1X64, 2X2, 2X4, 2X8, 2X16, 2X32, 2X64 Black box plc splitter
- » Insertion loss < 14.0
- » Wavelength sensitive
- » Data transmission

Rack mount PLC Splitter

- » Good uniformity and low insertion loss
- » Low Polarization Dependent Loss
- » Excellent Mechanical & Environmental stability
- » Stability Telcordia GR-1221 and GR-1209

1X2 FBT Coupler

- » Industry standard and custom housing available
- » Various coupling ratio and connector available
- » Low insertion loss, low PDL
- » High credibility and stability



X-CORN



OPTICAL TRANSCEIVER





OPTICAL TRANSCEIVER



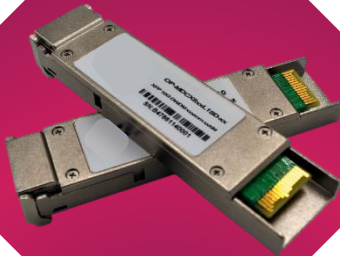
SFP Transceiver

- » Data Rate : 155M/622M/1.25G/4.25G/6G/8G
- » Wavelength : 850nm/1310nm/1550nm
- » CWDM/DWDM Wavelength option
- » Distance : 100m to 160km
- » Hot-pluggable SFP footprint



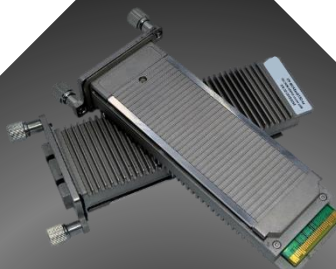
SFP+ Transceiver

- » Data Rate : 9.95 to 11.3Gb/s (Built-in Dual CDR)
- » Wavelength : 850nm/1310nm/1550nm
- » CWDM/DWDM option
- » Distance : 100m to 100km
- » Hot-pluggable SFP footprint
- » SFP MSA SFF-8472 SFF-8431 SFF-8432 Compliant



XFP Transceiver

- » Data Rate : 9.95 to 11.3Gb/s (Built-in Dual CDR)
- » Wavelength : 850nm/1310nm/1550nm
- » CWDM/DWDM option
- » Distance : 100m to 100km
- » Compliant with IEEE 802.3ae
- » ITU-T G.959,G.691 and G.692 compliant



Xenpak Transceiver

- » Data Rate : 10.3Gb/s
- » Wavelength : 850nm/1310nm/1550nm
- » CWDM/DWDM option
- » Distance : 100m to 100km
- » Hot-pluggable 70-Pin connector with XAUI Electrical Interface



OPTICAL TRANSCEIVER



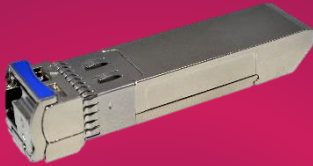
X2 Transceiver

- » Data Rate : IEEE 802.3ae 10 GBASE-LR at 10.3125Gbps
- » Wavelength : 850nm/1310nm/1550nm
- » CWDM/DWDM option
- » Management and control via MDIO 2-wire interface
- » Compatible with X2 MSA Rev2.0b
- » Hot-pluggable 70-Pin connector with XAUI Electrical Interface



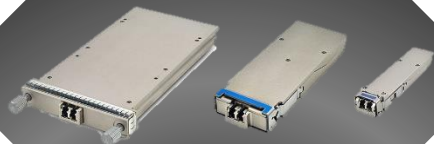
QSFP+ Transceiver

- » Data Rate : 4 Independent full-duplex channels up to 11.3Gbps data rate per wavelength, Total 40G
- » Wavelength : 850/1310/1271/1291/1311/1331nm
- » MTP/MPO optical connector
- » Hot-pluggable QSFP+ footprint
- » Compliant with IEEE 802.3ba
- » Compliant with QSFP+ MSA: SFF-8436



QSFP28 Transceiver

- » Data Rate : 4x26Gb/s, Total 103.1Gbps
- » Wavelength : 1296nm/1300nm/1305nm/1309nm
- » 4CWDM lanes MUX/DEMUX Design
- » Hot-pluggable QSFP28 form factor
- » Applicable for 10km SMF connection by duplex LC connector
- » Compliant with 100GBASE-LR4



CFP/CFP2/CFP4 Transceiver

- » Data Rate : 103.125 Gbps to 111.81 Gbps
- » Duplex LC optical receptacle and Single 3.3V power supply
- » Compliant with 100GBASE-LR4
- » No external reference clock
- » Integrated LANWDM TOSA/ROSA for up to 10km reach over SFM
- » Digital Diagnostics Monitoring Interface